

patron®

creative in care



CONTENT

● REHAB-BUGGIES

- Fully adjustable
- Semi adjustable
- Hybrid solutions

● REHAB-STROLLERS

- Fully adjustable
- Semi adjustable
- Hybrid solutions

● SEATING AND POSITIONING POSTURAL PRODUCTS

- Fully adjustable

● TRAVEL SYSTEM SOLUTIONS (FOR CHILDREN WITH SPECIAL NEEDS)

- Travel systems

● MODULAR CHASSIS

- high-low modular chassis
- modular stroller chassis-CSI-versions

● SPECIALTY PRODUCTS

- rehab-strollers for newborns
- rehab-strollers for twins and siblings
- customised products

REHAB-BUGGIES

Fully adjustable

- **CORZO Xcountry**
-

Semi adjustable

- **CORZINO Xcountry**
 - **CORZINO Classic**
 - **CORZINO Basic**
-

Hybrid solutions

- **PIPER Comfort**
-

CORZO Xcountry

Fully adjustable comfort rehab-buggy



- advanced rehab buggy
- can grow with the child
- 4 different sizes
- High load capacity (up to 75 kg)
- Crash tested



Newly redesigned undercarriages in 4 sizes are the base for the CORZO's very popular line of multipurpose rehab-buggies. Wide range of rehab-buggies CORZO Xcountry in all sizes 30, 34, 38 and 42 is determined for a short-stay usage of children with special needs, e.g. during the transportation. Fully foldable undercarriage of specific authentic design is produced from lightweight alloy profiles with powder coating finish. Buggy is equipped with optimized buggy-folding system, wheels of 175/265 mm, light frame, 5-point fixation ensuring high safety and comfortable handling, high maximum load (up to 75 kg - sizes 38, 42) and very easy folding. Those features make the products very well suitable for in-town conditions and public transportation, but as well as for light outdoor activities. Despite all the advantages of the buggy-folding, CORZO Xcountry preserves as well as fully the positioning and the "growing" advantages of the standard rehab-strollers, such a seat depth adjustment, height adjustable backrest, height adjustable footrest and backrest height extension (size 38, 42 only). Wide variety of sizes and modifications ensure fulfilling of majority requirements of user's wide spectrum. The correct usage of the product should be consulted with a seating specialist. Products corresponds to the newest EC standards as well as hygienic, technical and safety requirements.

Standard equipment:

- seat depth adjustable
- backrest height adjustable
- footrest height adjustable and foldable (angle adj.*)
- backrest angle adjustable (2 positions)
- backrest height extension (size 38, 42 only)
- 5-point immo. harness with crotch belt and shoulder padding
- 175 / 265 mm solid wheels
- cover patterns and frame colors according to current offer



folded stroller

Optional equipment:



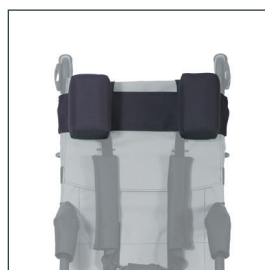
Canopy



Comfort seat cover



2-piece 3D-Flexi footrest



Headrest



Abductor



Armrest foldable (set)



Basket - textile



Chest immo. belt



Comfort side protection



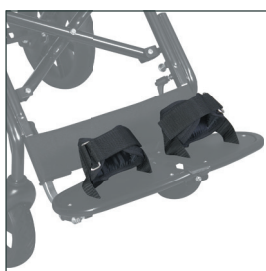
Thigh fixation



Fixation waistcoat



H-style harness



Foot fixation



Workboard

... and more accessories!

according to the actual list

Growing functions



Standard 1-piece foldable footrests



2-piece 3D-Flexi footrest option.

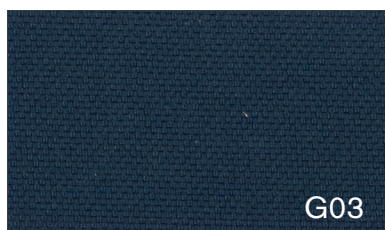


Backrest Height Extension (only size 38 and 42)

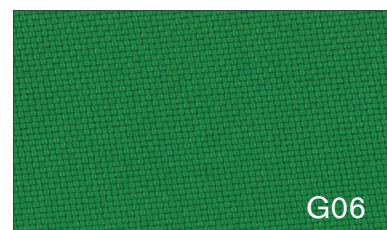
DESIGN OPTIONS



Ruby red



Dark blue



Grass green



Black

SUCCESSFULLY CRASH TESTED

The product had been successfully crash tested and fulfilled all the requirements of EN ISO 7176/19. It enables to use the rehab-buggy not only for a common duty, but as well as for the transportation in specially adjusted motor vehicles, equipped with the anchoring points and equipment.



Order codes:

CORZO Xcountry 30
CORZO Xcountry 34
CORZO Xcountry 38
CORZO Xcountry 42

CRX30PYYY
CRX34PYYY
CRX38PYYY
CRX42PYYY

	CRX30	CRX34	CRX38	CRX42
Backrest height [mm]	550-650	580-690	650-930	650-930
Seat depth [mm]	280-340	290-350	320-390	330-410
Seat width [mm]	300	340	380	420
Seat to footrest [mm]	310-440	320-460	290-450	350-520
Backrest angle	90°, 89°	94°, 91°	90°, 88°	94°, 92°
Seat angle	20°	25°	25°	21°
Total length [mm]	960/940	1010/1000	980/970	1050/1040
Total width [mm]	520	570	620	650
Total height /with handle [mm]	1010/1000-1110	1070/960-1040	1170/920	1300/1210
Brake	foot oper.	foot oper.	foot oper.	foot oper.
Weight	12,7 kg	13,0 kg	14,0 kg	14,7 kg
Maximum load	45,0 kg	55,0 kg	75,0 kg	75,0 kg
Folded stroller length [mm]	1140/1160	1160/1170	1180	1260
Folded stroller width [mm]	320	310/300	320	370
Folded stroller height [mm]	340/370	360	330	320

Manufactured by:
patron

PATRON Bohemia a.s. | Ceskolipska 3419, CZ-27601 Melnik, Czech Republic
tel.: +420-315-630-135, +420-315-630-111
e-mail: reha.en@patron.eu | <http://www.patron.eu>



CORZINO Xcountry

Semi adjustable comfort rehab buggy



- comfort & elegant
- reinforced back upholstery
- variability in use
- 4 different sizes
- High load capacity (up to 75 kg)



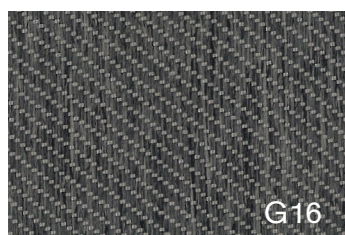
folded buggy



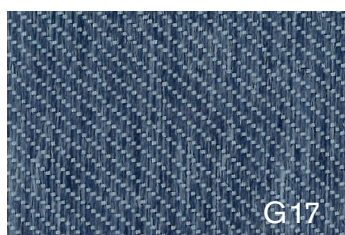
Standard 1-piece foldable footrest or 2-piece 3D-Flexi footrest option.



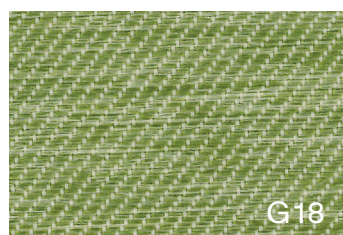
DESIGN OPTIONS



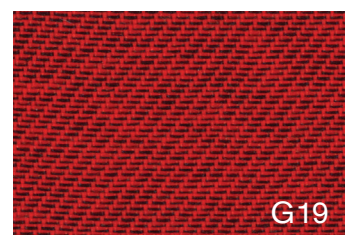
Slate grey



Denim blue



Peas green



Ruby red

Newly redesigned undercarriages in 4 sizes is the base for the CORZINO's comfort line of rehab-buggies. This products line is produced in sizes 30, 34, 38 and 42 and it is determined for short-stay usage of children with special needs, e.g. during the transportation. CORZINO Xcountry – product line is based on redesigned undercarriage of well approved CORZO products line. Fully foldable undercarriage of specific authentic design is produced from lightweight profiles with powder coating finished. Buggy is equipped with optimized buggy-folding system, newly redesigned well padded ergonomical seat cover with reinforced back, wheels of 175/265 mm, light frame, 5-point fixation ensuring high safety and comfortable handling, high maximum load (up to 75 kg -size 38, 42) and very easy folding. Those features make the products very well suitable for in-town conditions and public transportation, but as well as for light outdoor activities. Despite all the advantages of the buggy-folding, CORZINO Xcountry preserves the positioning advantages of the standard rehab-strollers. Buggy offers as well as “growing” features – fully height adjustable footrest and detachable backrest height extension (size 38, 42 only). Wide variety of sizes and modifications ensure fulfilling of majority requirements of user's wide spectrum. The correct usage of the product should be consulted with a seating specialist. Products corresponds to the newest EC standards as well as hygienic, technical and safety requirements.

Standard equipment:

- well padded ergonomical seat cover with reinforced back
- comfort side protection
- footrest height adjustable and foldable (angle adj.*)
- backrest angle adjustable (2 positions)
- 5-point immo. harness with crotch belt and shoulder padding
- backrest height extension (size 38, 42 only)
- 175/265 mm solid wheels
- cover patterns and frame colors according to current offer

Optional equipment:

- canopy
- extended comfort side protection
- 2-piece 3D-Flexi footrest
- headrest, abductor, side trunk rest, fixation waistcoat, H-style harness, feet fixation, and other positioning accessories according to the actual list

Order codes:

CORZINO Xcountry 30	CNX30PYYY
CORZINO Xcountry 34	CNX34PYYY
CORZINO Xcountry 38	CNX38PYYY
CORZINO Xcountry 42	CNX42PYYY

SUCCESSFULLY CRASH TESTED

The product had been successfully crash tested and fulfilled all the requirements of EN ISO 7176/19.

It enables to use the rehab-buggy not only for a common duty, but as well as for the transportation in specially adjusted motor vehicles, equipped with the anchoring points and equipment.

	CNX 30	CNX 34	CNX 38	CNX 42
Backrest height [mm]	540	670	670/850	690/880
Seat depth [mm]	280	320	360	380/390
Seat width [mm]	300	340	380	420
Seat to footrest [mm]	290-420	300-440	270-430	330-500
Backrest angle	90°, 89°	98°, 96°	96°, 94°	95°, 98°
Seat angle	22°	23°, 20°	24°	21°
Total length [mm]	980	1020	980/970	1070/1060
Total width [mm]	520	560	615	640
Total height /with handle [mm]	1010/1010	1050/1020	1220/930	1270/970
Brake	foot oper.	foot oper.	foot oper.	foot oper.
Weight	11,8 kg	12,4 kg	13,8 kg	14,0 kg
Maximum load	45,0 kg	55,0 kg	75,0 kg	75,0 kg
Folded stroller length [mm]	1170	1220	1220	1300
Folded stroller width [mm]	310	310	320	370
Folded stroller height [mm]	350	370	360	320

CORZINO Classic

Semi adjustable standard rehab buggy



- great ratio of usage value and price
- 4 different sizes
- High load capacity (up to 75 kg)



folded buggy

fully height adjustable footrest



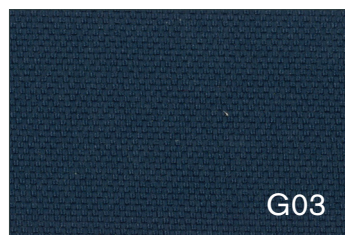
Standard 1-piece foldable footrest or 2-piece 3D-Flexi footrest option.



DESIGN OPTIONS



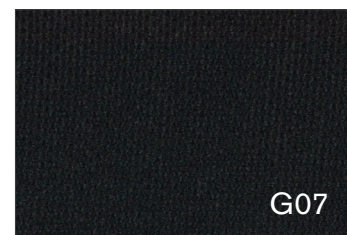
Ruby red



Dark blue



Grass green



Black

Newly redesigned undercarriage in 4 sizes is the base for the CORZINO's standard line of rehab-buggies. This products line is produced in sizes 30, 34, 38 and 42 and it is determined for short-stay usage of children with special needs, e.g. during the transportation. CORZINO Classic – product line is based on redesigned undercarriage of well approved CORZO products line. Fully foldable undercarriage of specific authentic design is produced from lightweight profiles with powder coating finish. Buggy is equipped with optimized buggy-folding system, wheels of 175/265 mm, light frame, 5-point fixation ensuring high safety and comfortable handling, high maximum load (up to 75 kg - size 38, 42) and very easy folding. Those features make the products very well suitable for in-town conditions and public transportation, but as well as for light outdoor activities. Despite all the advantages of the buggy-folding CORZINO Classic preserves as well as the positioning advantages of the standard rehab-strollers. Buggy offers as well as “growing” features – fully height adjustable footrest and detachable backrest height extension (size 38, 42 only). Wide variety of sizes and modifications ensure fulfilling of majority requirements of user's wide spectrum. The correct usage of the product should be consulted with a seating specialist. Products corresponds to the newest EC standards as well as hygienic, technical and safety requirements.

Standard equipment:

- footrest height adjustable and foldable (angle adj.*)
- backrest angle adjustable (2 positions)
- 5-point immo. harness with crotch belt and shoulder padding
- backrest height extension (size 38, 42 only)
- 175/265 mm solid wheels
- cover patterns and frame colors according to current offer

Optional equipment:

- canopy
- comfort seat cover
- comfort side protection, 2-piece 3D-Flexi footrest
- headrest, abductor, side trunk rest, fixation waistcoat, H-style harness, feet fixation, and other positioning accessories according to the actual list

Order codes:

CORZINO Classic 30	CNC30PYYY
CORZINO Classic 34	CNC34PYYY
CORZINO Classic 38	CNC38PYYY
CORZINO Classic 42	CNC42PYYY

SUCCESSFULLY CRASH TESTED

The product had been successfully crash tested and fulfilled all the requirements of EN ISO 7176/19.

It enables to use the rehab-buggy not only for a common duty, but as well as for the transportation in specially adjusted motor vehicles, equipped with the anchoring points and equipment.

	CNC 30	CNC 34	CNC 38	CNC 42
Backrest height [mm]	540	670	670/850	880/690
Seat depth [mm]	280	320	360	380/390
Seat width [mm]	300	340	380	420
Seat to footrest [mm]	290-420	300-440	270-430	330-500
Backrest angle	86°, 85°	98°, 96°	96°, 94°	95°, 98°
Seat angle	22°	23°, 20°	24°	21°
Total length [mm]	980	1020	980/970	1070/1060
Total width [mm]	520	560	615	640
Total height / with handle [mm]	1010/1010	1050/1020	1220/930	1270/970
Brake	foot oper.	foot oper.	foot oper.	foot oper.
Weight	11,8 kg	12,4 kg	13,8 kg	14,0 kg
Maximum load	45,0 kg	55,0 kg	75,0 kg	75,0 kg
Folded stroller length [mm]	1170	1220	1220	1300
Folded stroller width [mm]	310	310	320	370
Folded stroller height [mm]	350	370	360	320

CORZINO Basic

Semi adjustable budget rehab buggy



- Simple durable design
- 4 different sizes
- High load capacity (up to 75 kg)



backrest
angle
adjustment

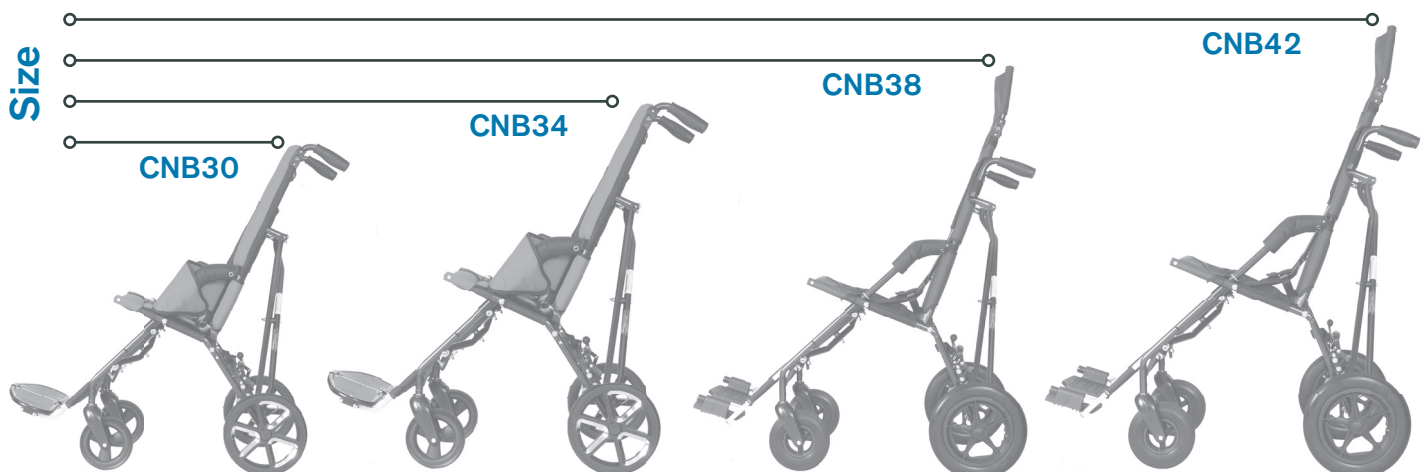
fully height
adjustable
footrest



folded buggy



2-piece BASIC foldable footrest



Size

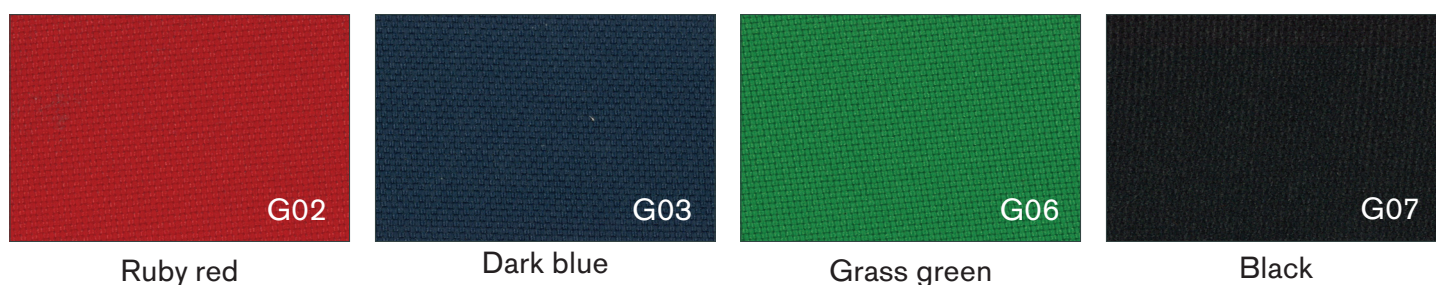
CNB30

CNB34

CNB38

CNB42

DESIGN OPTIONS



Comprehensive-range of undercarriages in 4 sizes is the base for the CORZINO's budget line of rehab-buggies. This products line is produced in sizes 30, 34, 38 and 42 and it is determined for short-stay usage of children with special needs, e.g. during the transportation. CORZINO Basic – product line is based on redesigned undercarriage of well approved CORZO products line. Fully foldable undercarriage of specific authentic design is produced from lightweight profiles with powder coating finish. Buggy is equipped with optimized buggy-folding system, wheels of 200/300 mm, light frame, 5-point fixation ensuring high safety and comfortable handling, high maximum load (up to 75 kg - size 38, 42) and very easy folding. Those features make the products very well suitable for in-town conditions and public transportation, but as well as for light outdoor activities. Despite all the advantages of the buggy-folding CORZINO Basic preserves as well as the positioning advantages of the standard rehab-strollers. Buggy offers as well as “growing” features – fully height adjustable footrest and detachable backrest height extension (size 38, 42 only). Wide variety of sizes and modifications ensure fulfilling of majority requirements of user's wide spectrum. The correct usage of the product should be consulted with a seating specialist. Products corresponds to the newest EC standards as well as hygienic, technical and safety requirements.

Standard equipment:

- footrest height adjustable and foldable
- backrest angle adjustable (2 positions)
- 5-point immmo. harness with crotch belt and shoulder padding
- backrest height extension (size 38, 42 only)
- 200/300 mm big solid wheels
- cover patterns and frame colors according to current offer

Optional equipment:

- canopy
- headrest, abductor, side trunk rest, fixation waistcoat, H-style harness, feet fixation, and other positioning accessories according to the actual list

Order codes:

CORZINO Basic 30	CNB30PYYY
CORZINO Basic 34	CNB34PYYY
CORZINO Basic 38	CNB38PYYY
CORZINO Basic 42	CNB42PYYY

	CNB 30	CNB 34	CNB 38	CNB 42
Backrest height [mm]	540	670	850	880
Seat depth [mm]	280	320	360	380
Seat width [mm]	300	340	380	420
Seat to footrest [mm]	290-420	300-440	270-430	330-500
Backrest angle	90°, 89°	98°, 96°	96°, 94°	98°, 95°
Seat angle	22°	23°	24°	21°
Total length [mm]	1000	1040	1000	1090
Total width [mm]	530	580	630	650
Total height /with handle [mm]	1030/1030	1070/1040	1240/950	1290/990
Brake	foot oper.	foot oper.	foot oper.	foot oper.
Weight	12,0 kg	12,7 kg	14,0 kg	14,2 kg
Maximum load	45,0 kg	55,0 kg	75,0 kg	75,0 kg
Folded stroller length [mm]	1190	1240	1240	1320
Folded stroller width [mm]	320	320	350	370
Folded stroller height [mm]	370	390	400	360

PIPER Comfort

Hybrid semi adjustable standard rehab-buggy



- extended backrest recline
- extended backrest height
- large adjustable footrest
- very compact foldable buggy
- one-piece foldable handlebar
- load capacity up to 50 kg
- suitable for already very small children (with seat size reduction set)

Size

UNI



PIPER Comfort is the new state of the art comfort rehab-buggy. This buggy is determined for short stay usage of children with special needs. Fully foldable undercarriage is produced from lightweight aluminum profiles. Buggy is equipped with seat base with adjustable calf rest, extended reclining backrest, solid wheels of 175/225 mm, big detachable and adjustable footrest, 5-point immo belt with shoulder pads. Backrest is equipped with flexible multi-anchoring system for optimal accessory shoulder alignment. Those features make the products very well suitable for intown activities and public transportation, but as well as for light outdoor activities. The variability of the buggy and the ability to attach a wide range of accessories, ensure fulfilling of majority requirements of user's wide spectrum.

The correct usage of the product should be consulted with a seating specialist. Products corresponds to the newest EC standards as well as hygienic, technical and safety requirements.

Standard equipment:

- seat depth non-adjustable
- extended backrest height non-adjustable
- backrest recline adjustable
- footrest height adjustable, detachable
- seat width adjustable by FLEXI-pads set (*) (optional eq.)
- 5-point immo.harness with crotch belt and shoulder padding
- 175/225 mm solid wheels, front with swivel lock
- detachable wheels, forks
- one-piece foldable handle
- basket, transportation lock
- frame colours and cover patterns according to the current offer



folded buggy

Optional equipment:



Flexipads set



Headrest adjustable



Abduction Block



Feet fixation



Canopy Classic



Raincover



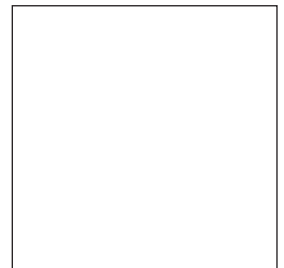
Footmuff - Summer



Footmuff - Winter



Seat inlay (seat size reduction)



Footrest raiser

.... and more
according to
actual list

Growing functions



with the Seat inlay and footrest raiser set is possible to use for small children from two years of age



Positioning



seat positioning



footrest positioning



DESIGN OPTIONS



G06



G07



G12



G13

SUCCESSFULLY CRASH TESTED

The product had been successfully crash tested and fulfilled all the requirements of EN ISO 7176/19. It enables to use the rehab-buggy not only for a common duty, but as well as for the transportation in specially adjusted motor vehicles, equipped with the anchoring points and equipment.

Order codes:

PIPER Comfort:

PIC34PYYY

	with Seat inlay / footrest raiser	PIPER Comfort
Backrest height [mm]	680	680
Seat depth [mm]	240	290
Seat width [mm]	230/270	350
Seat to footrest [mm]	220-225	250-375
Backrest angle	90° - 135°	90° - 135°
Seat angle	26°	26°
Total length [mm]	1080	1080
Total width [mm]	590	590
Total height/with handle [mm]	100	1000
Brake	foot oper.	foot oper.
Weight	14,5 kg	14,5 kg
Maximum load	50,0 kg	50,0 kg
Folded buggy length [mm]	1020	1020
Folded buggy width [mm]	310	310
Folded buggy height [mm]	300	300

Manufactured by:
patron

PATRON Bohemia a.s. | Ceskolipska 3419, CZ-27601 Melnik, Czech Republic
tel.: +420-315-630-135, +420-315-630-111
e-mail: reha.en@patron.eu | <http://www.patron.eu>



REHAB-STROLLERS

Fully adjustable

- **TOM5 Streeter**
 - **TOM5 Clipper**
 - **TOM4 Classic**
-

Semi adjustable

- **JACKO Streeter**
 - **JACKO Clipper**
 - **BEN Plus**
-

Hybrid solutions

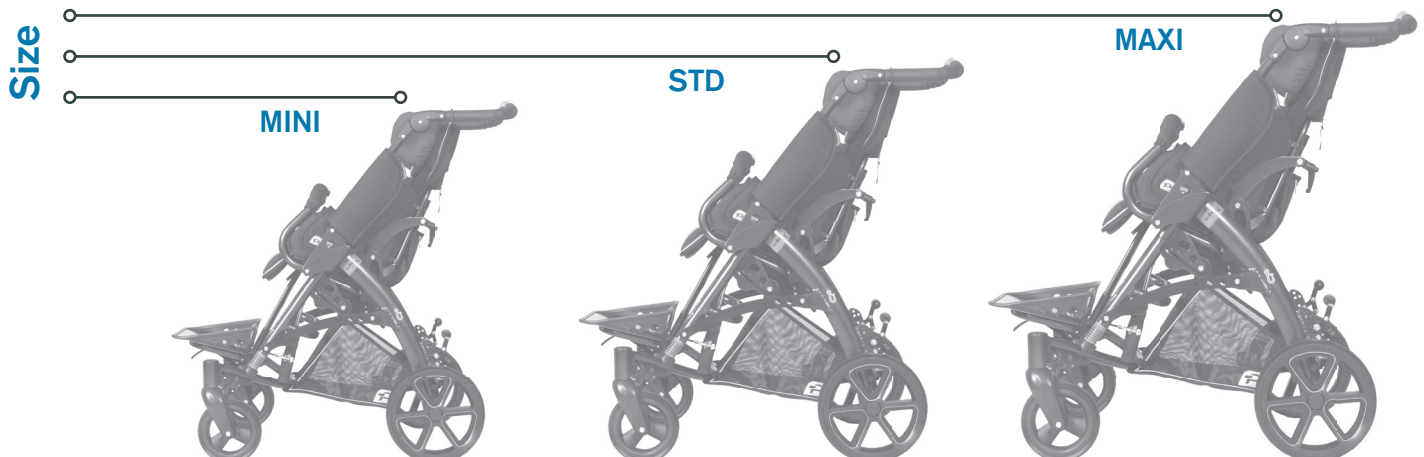
- **DIXIE Plus**
-

TOM 5 Streeter

Fully adjustable comfort rehab-stroller



- 100% ALUX high-tech chassis
- 3 sizes- MINI, STD, MAXI
- unique MONOSLIDE design
- excelent colour range
- wide accessory range



Newly redesigned high-tech full-aluminum stroller chassis is produced by the high-tech ALUX production method, which takes advantage of an aluminum alloy and a titan joint hardener combination. ALUX method ensures chassis low weight and high durability.

Fully foldable chassis includes among others well designed chassis to seat interface, safe brake-system, spring cushioned shock absorber, ergonomically shaped handlebar with the height adjustment.

100% ALUX full-aluminum seat is as well as produced fully by high-tech ALUX production method. Seat-unit is detachable, reversible and fully size and position adjustable. It includes not only highly innovative MONOSLIDE design, but as well as easy tilt-in-space telescope operated system and well approved flexible system for attaching of fixation devices and positioning accessories. Seat shell is covered by fully detachable soft padded textile upholstery in fashionable design. Easy handling is ensured as well as by the stroller's fully foldable frame even with attached seat.

TOM 5 has been designed in cooperation with professional designers and seating specialists and it excels not only in design but as well as in use value – it is one of the lightest strollers in the category. Additionally 175/265 mm solid wheels enables usage of the product not only in town but as well as for the light outdoor activities.

Standard equipment:

- detachable and reversible seat-unit
- height adjustable backrest
- depth and width adjustment of the seat-base.
- seat-unit with fully adjustable tilt-in-space function
- fully reclining backrest with lateral supports
- angle and height adjustable footrest
- angle adjustable footplate
- 175/265 mm solid wheels
- detachable grab bar with cover
- height adjustable ergonomic handlebar
- upholstery with reflexive safety marks
- basket, hip rest, padded frame cover
- frame colors and fabric patterns according to the current offer



folded stroller

Optional equipment:



Headrest COMFORT



Neckrest COMFORT



Side trunkrest CLASSIC



Basket-HD (steel)



Calf rest COMFORT



4-point immo. belt
COMFORT



Abduction block



Immo. Waistcoat
COMFORT



Padded frame cover with side
protection



Pelvis fixation



Canopy CLASSIC



Canopy COMFORT with
rain cover



High-low indoor frame
CLASSIC



Work board CLASSIC

.... and
much more
accessories!

according to the actual list

Full scale of growing functions



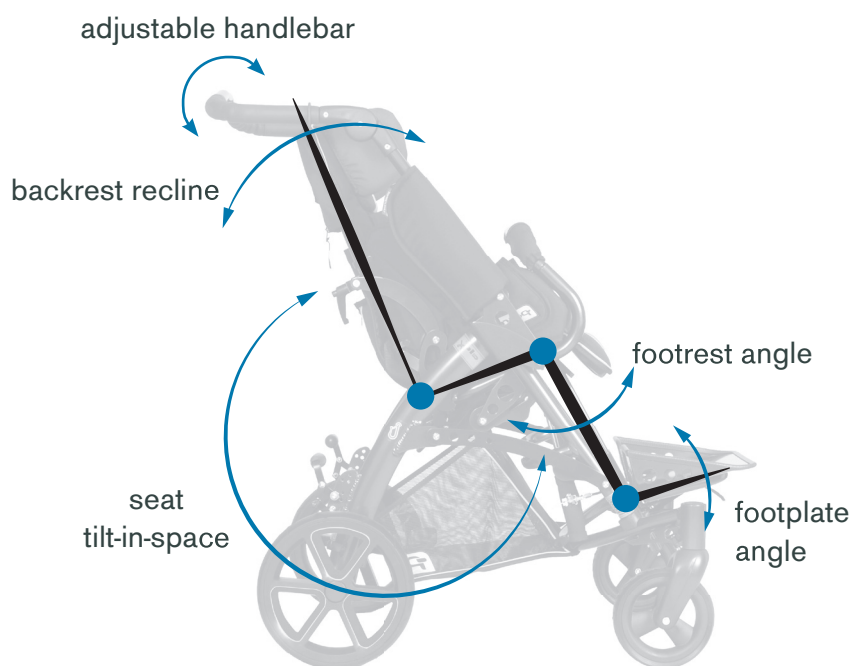
Full seat positioning



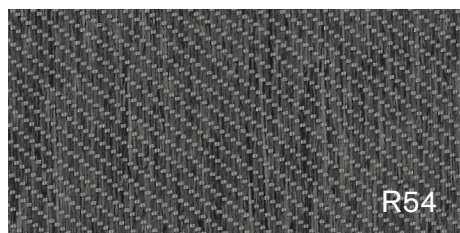
fully adjustable



reversible seat



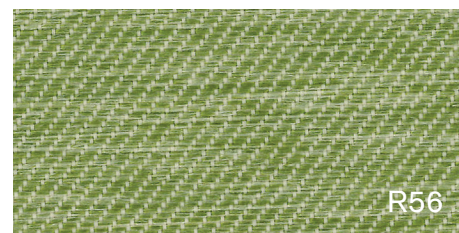
DESIGN OPTIONS



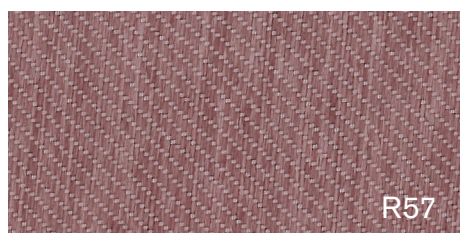
Slate grey



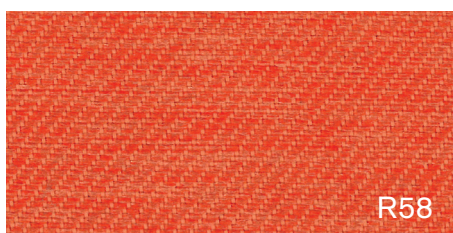
Denim blue



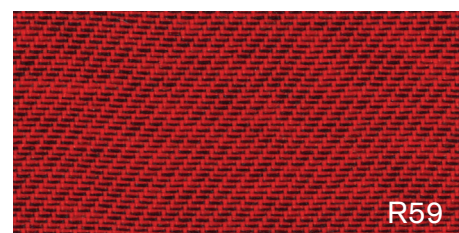
Peas green



Antik pink



Papaya orange



Ruby red

SUCCESSFULLY CRASH TESTED



The product had been successfully crash tested and fulfilled all the requirements of EN ISO 7176/19. It enables to use the rehab-buggy not only for a common duty, but as well as for the transportation in specially adjusted motor vehicles, equipped with the anchoring points and equipment.

Order codes:

TOM 5 Streeter MINI:	T5SWKPMYY
TOM 5 Streeter STD:	T5SWKPYYY
TOM 5 Streeter MAXI:	T5SWKPXYX

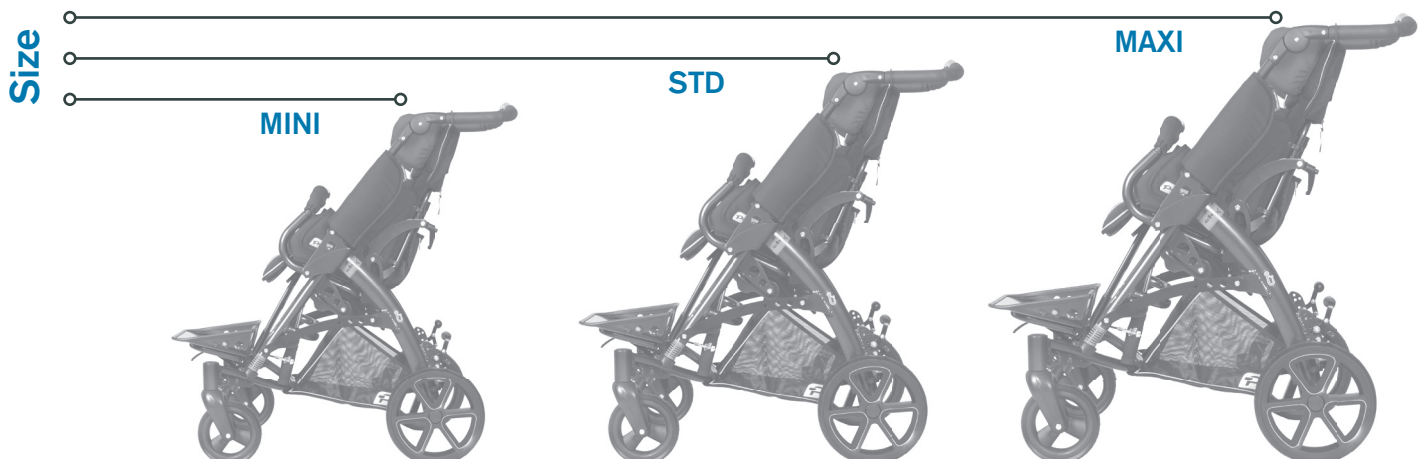
	MINI	STD	MAXI
Backrest height [mm]	440-570	510-680	550-700
Seat depth [mm]	185-270	230-330	290-400
Seat width [mm]	220/step./280	250/step./350	270/step./390
Seat to footrest [mm]	90-260	120-360	120-390
Backrest angle	0° - 170°	0° - 170°	0° - 170°
Seat angle	+40/-20°	+40/-20°	+40/-20°
Total length [mm]	760 (860*)	760 (870*)	760 (870*)
Total width [mm]	590	630	670
Total height /with adj.handle [mm]	950/1110	950/1110	970/1180
Brake	foot oper.	foot oper.	foot oper.
Weight	15,5 kg	17,5 kg	19,0 kg
Maximum load	35,0 kg	40,0 kg	50,0 kg
Folded stroller length [mm]	840 (850*)	850 (860*)	860 (870*)
Folded stroller width [mm]	590	630	670
Folded stroller height [mm]	360	370	370

TOM 5 Clipper

Fully adjustable standard rehab-stroller



- the best ratio of usage value and price
- unique MONOSLIDE design
- 3 sizes- MINI, STD, MAXI
- excellent cover colour range
- very wide accessory range
- lightweight alloy chassis



TOM 5 Clipper is highly innovative mobility medical device for transport of the children with special needs, which require full positioning features as well as full body support and stabilization in sitting for everyday activities. Redesigned well approved high-tech alloy chassis is produced partially by the high-tech ALUX production method, which takes advantage of an aluminium alloy and a titan joint hardener combination. ALUX method ensures chassis low weight and high durability. Fully foldable chassis includes among others well designed and crash tested chassis to seat interface, foot operated brake-system, ergonomically shaped handlebar with the height adjustment and thoroughly redesigned seat tilt-in-space telescope operated system.

Lightweight seat unit is manufactured in 3 sizes, produced partially by high-tech ALUX production method. Seat unit is detachable, reversible and fully size and position adjustable (when using the FLEXI-pads set). Highly innovative seat MONOSLIDE design offers well approved flexible system for attaching and anchoring of fixation devices and positioning accessories (great variety of professional accessory available upon request). Seat shell is covered by fully detachable soft padded textile upholstery. Easy handling is ensured by the stroller's fully foldable frame even with attached seat.

Standard equipment:

- detachable and reversible seat-unit
- height adjustable backrest
- depth adjustable seat-base.
- width adjustable seat by FLEXI-pads set (**)(optional equipment).
- seat-unit with fully adjustable tilt-in-space function
- fully reclining backrest
- angle and height adjustable footrest
- angle adjustable footplate
- 175/265 mm solid wheels
- detachable grab bar with cover
- height adjustable ergonomic handlebar
- upholstery with reflexive safety marks
- frame colours and cover patterns according to the current offer



folded stroller

Optional equipment:



Basket



Padded frame covers



FLEXI-pads set



Hip rest



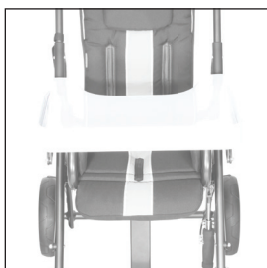
Canopy



Rain cover



Calf rest



Workboard



Headrest



Side trunk rest



4-point immo. belt



Abductor wedge



Pelvis fixation



Immo. Waistcoat
CLASSIC

.... and
much more
accessories!

according to the actual list

Full scale of growing functions



Full seat positioning

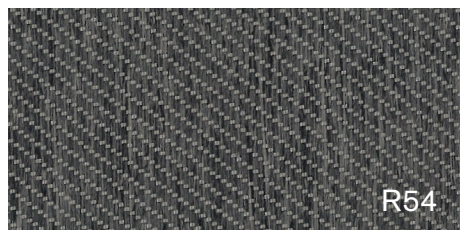


fully adjustable

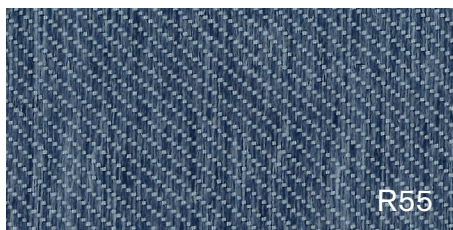


reversible seat

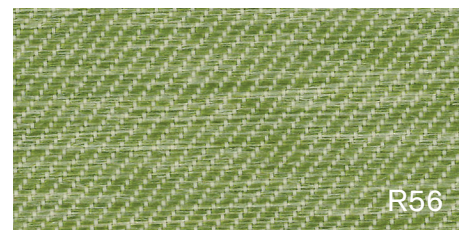
DESIGN OPTIONS



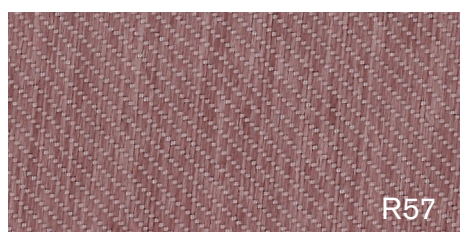
Slate grey



Denim blue



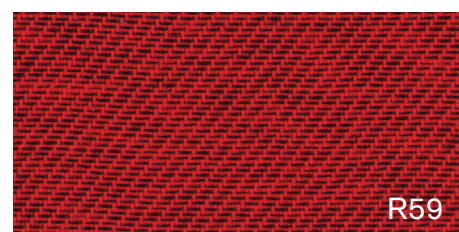
Peas green



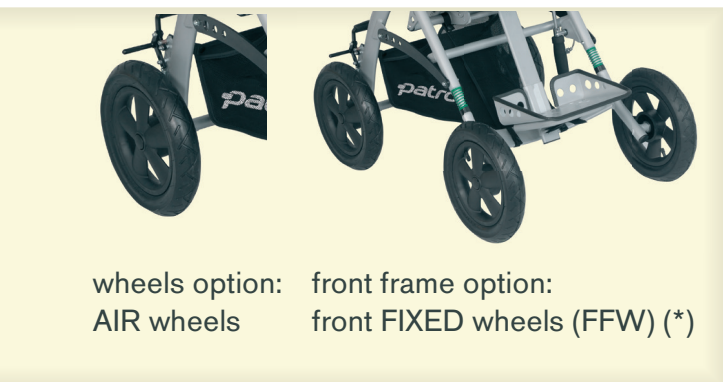
Antik pink



Papaya orange



Ruby red



Order codes:

TOM 5 Clipper MINI:	T5CWKPMYY
TOM 5 Clipper STD:	T5CWKPYYY
TOM 5 Clipper MAXI:	T5CWKPXYX

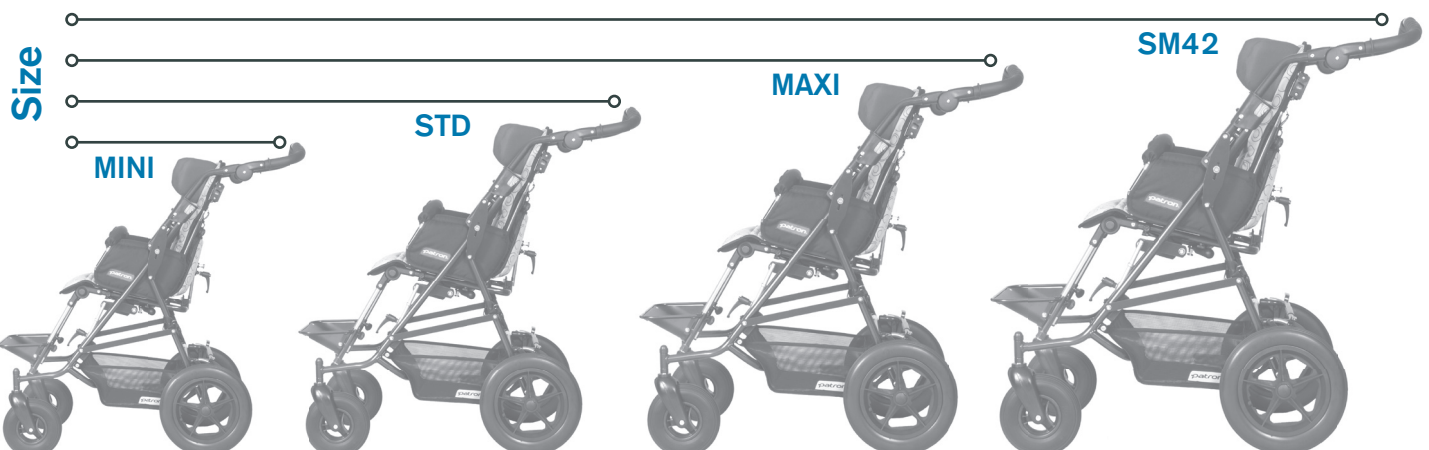
	MINI	STD	MAXI
Backrest height [mm]	440-570	510-680	550-700
Seat depth [mm]	185-240	230-330	290-400
Seat width [mm]	190/step./290 (**)	250/step./350 (**)	290/step./390 (**)
Seat to footrest [mm]	90-260	120-360	120-390
Backrest angle	0° - 170°	0° - 170°	0° - 170°
Seat angle	+38/-28°	+38/-28°	+38/-28°
Total length [mm]	770 (870*)	770 (880*)	770 (880*)
Total width [mm]	595	640	675
Total height /with adj.handle [mm]	950/1100	950/1110	970/1180
Brake	foot oper.	foot oper.	foot oper.
Weight	18,0 kg	19,0 kg	20,0 kg
Maximum load	40,0 kg	40,0 kg	50,0 kg
Folded stroller length [mm]	860 (870*)	880 (890*)	890 (900*)
Folded stroller width [mm]	595	640	675
Folded stroller height [mm]	370	390	430

TOM 4 Classic

Fully adjustable budget rehab-stroller



- durable and approved
- full positioning features
- stabilization in sitting for everyday activities.



TOM 4 Classic – product line of fully adjustable rehab-strollers for handicapped children is based on improved design of the TOM-line undercarriages with 200/300 mm solid wheels, that enables usage of the product in town and as well as for the outdoor activities.

Fully foldable undercarriage is produced from lightweight thin-walled tubes with powder coating finish. Redesigned seat-unit is detachable, reversible and fully size and position adjustable. It includes as well new flexible system for attaching of fixation devices and accessories. Seat shell is covered by fully detachable soft padded textile upholstery in fashionable design. Easy handling is ensured as well as by the stroller's fully foldable frame even with attached seat. All the products correspond to standard hygienic, technical and safety requirements.

Standard equipment:

- detachable and reversible seat-unit
- height adjustable backrest and depth adjustment of the seat-base.
- width adjustable seat by FlexiPads set (optional equipment)
- seat with fully adjustable tilt in space function
- fully reclining backrest
- angle and height adjustable footrest
- 200/300 mm solid wheels
- detachable soft side-cushions
- detachable grab bar with cover
- frame colour and fabric patterns according to the current offer



folded stroller

Optional equipment:



Canopy CLASSIC



Basket (textile)



Work board BASIC - UNI



FLEXI-pads set



Rain cover



Headrest CLASSIC



Side trunkrest CLASSIC



4-point immobilisation belt CLASSIC



Hip rest CLASSIC



Abduction block CLASSIC



Immo. Waistcoat CLASSIC



H-style harness CLASSIC



Pelvis fixation



Feet fixation - pair

.... and
much more
accessories!

according to the actual list

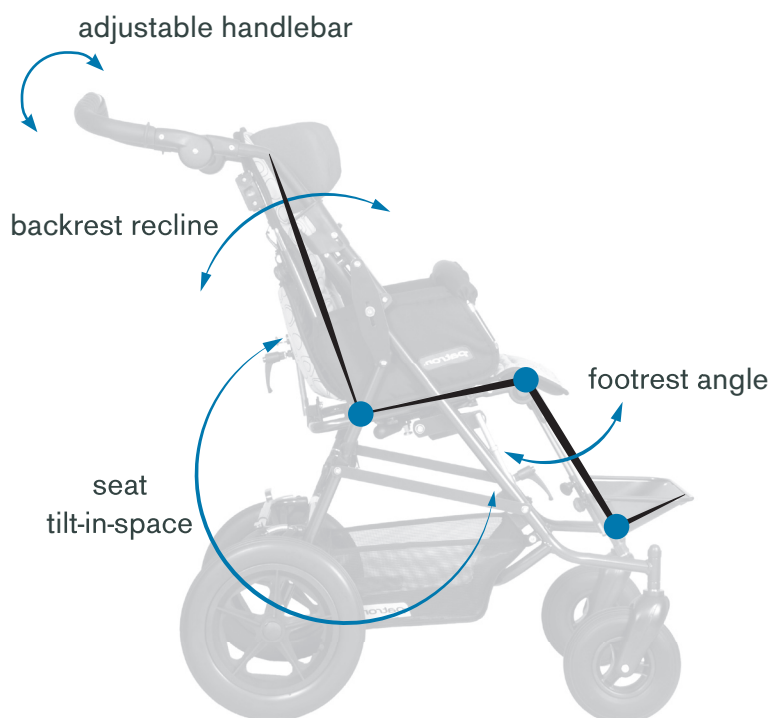
Full scale of growing functions



Full seat positioning

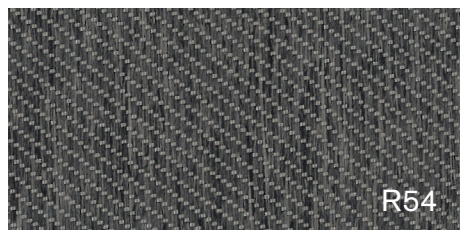


fully adjustable

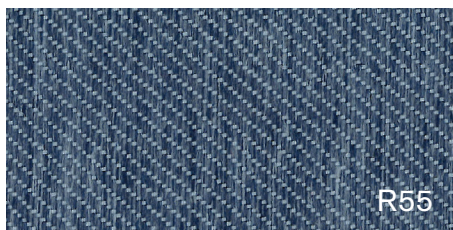


reversible seat

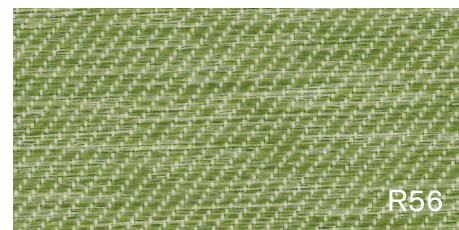
DESIGN OPTIONS



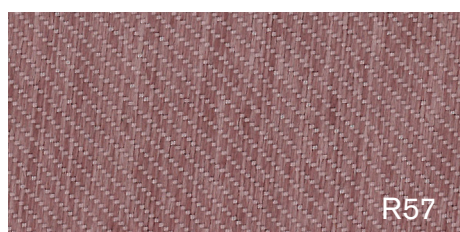
Slate grey



Denim blue



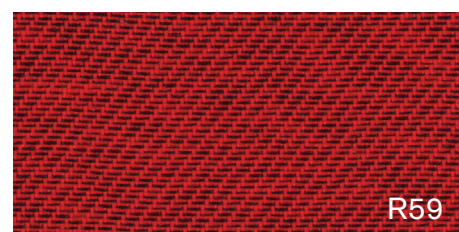
Peas green



Antik pink



Papaya orange



Ruby red

SUCCESSFULLY CRASH TESTED

The product had been successfully crash tested and fulfilled all the requirements of EN ISO 7176/19.

It enables to use the rehab-
buggy not only for a common
duty, but as well as for the
transportation in specially
adjusted motor vehicles,
equipped with the anchoring
points and equipment.



Order codes:

TOM 4 Classic MINI:	T4CWKPMYY
TOM 4 Classic STD:	T4CWKPYYY
TOM 4 Classic MAXI:	T4CWKPXYX
TOM 4 Classic SuperMAXI 42 (reinforced version):	T4CWKPS2Y

	MINI	STD	MAXI	SuperMAXI 42
Backrest height [mm]	450-600	520-680	570-680	570-680
Seat depth [mm]	200-260	270-310	320-430	320-430
Seat width [mm]	260/300	240/280/340	280/320/380	425
Seat to footrest [mm]	140-280	200-350	240-400	240-400
Backrest angle	0° - 175°	0° - 175°	0° - 165°	0° - 165°
Seat angle	+/-27°	+/-27°	+/-25°	+/-25°
Total length [mm]	990	990	1070	1100
Total width [mm]	620	620	660	680
Total height /with adj.handle [mm]	1010	1010	1030	1030
Brake	foot oper.	foot oper.	foot oper.	foot oper.
Weight	17,0 kg	18,0 kg	20,5 kg	24,0 kg
Maximum load	35,0 kg	35,0 kg	50,0 kg	75,0 kg
Folded stroller length [mm]	930	930	960	960
Folded stroller width [mm]	620	620	660	680
Folded stroller height [mm]	550	550	630	660

Manufactured by:
patron

PATRON Bohemia a.s. | Ceskolipska 3419, CZ-27601 Melnik, Czech Republic
tel.: +420-315-630-135, +420-315-630-111
e-mail: reha.en@patron.eu | <http://www.patron.eu>



JACKO Streeter

Semi adjustable lightweight comfort rehab-stroller



seat depth
adjustment

- 100% ALUX high-tech chassis
- 2 sizes- STD, MAXI
- unique MONOSLIDE design
- excelent colour range
- wide accessory range
- best option for children with mild postural needs

Size

STD

MAXI



Newly redesigned lightweight aluminum chassis, accentuating the simplicity in usage and modern pure design. The stroller is determined for children with mild postural needs where easy handling, very compact size and lightweight chassis are requested. Comfort seating with adjustable seat depth and optionally with seat width is ensured by fully detachable soft padded textile upholstery in fashion style as well as by fully reclining backrest and angle and height adjustable footrest.

The design of the stroller enabling folding to the very compact size as well as to reach excellent rate of the width between seat and chassis, what also makes possible for size STD to get through of entrance 600 mm.

Jacko is available in two sizes and it is determined not only for city usage but due to 175/265 mm solid wheels also for the light outdoor activities.

The correct usage of the product should be consulted with a seating specialist. The product corresponds to the newest EC standards as well as hygienic, technical and safety requirements.

Standard equipment:

- fully reclining backrest
- angle and height adjustable footrest
- angle adjustable footplate
- 175/260 mm solid wheels
- detachable grab bar with cover
- height adjustable ergonomic handlebar
- reflexive safety marks
- seat depth adjustment (3 positions)
- seat width adjustable by FLEXI-pads set (optional equipment)
- frame colours and fabric patterns according to the current offer.



folded stroller

Optional equipment:



Headrest COMFORT



Calf rest



Bag STYLE Plus



Feet fixation - pair



Lumbar support



Padded frame covers



Basket



Sun shade



5-point immobilization belt



abductor wedge



Side trunkrest CLASSIC



H-style harness BASIC



Rain cover JACKO



Footmuff - Summer

.... and
much more
accessories!

according to the actual list

Growing functions



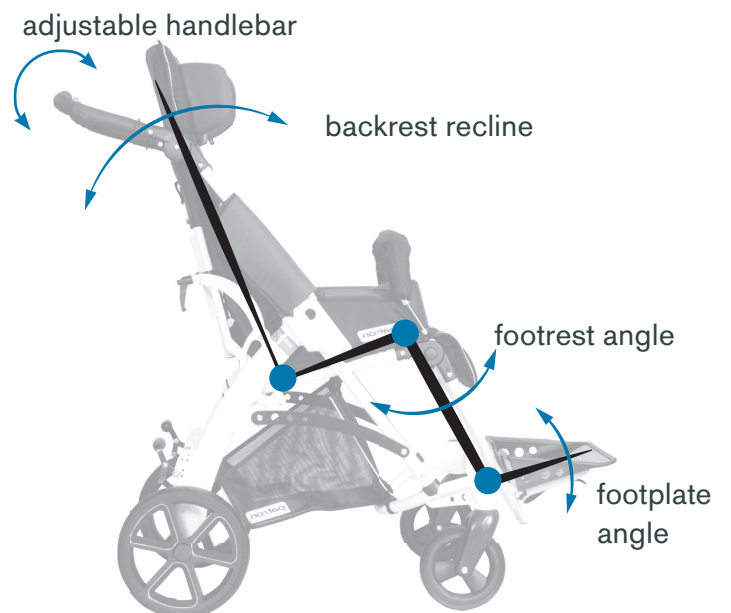
with the Seat inlay and footrest raiser set is possible to use for small children from two years of age



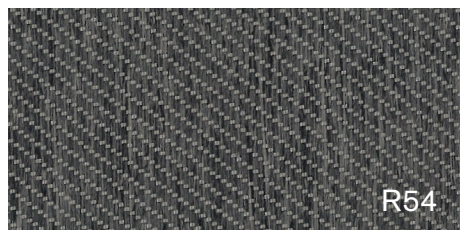
Seat positioning



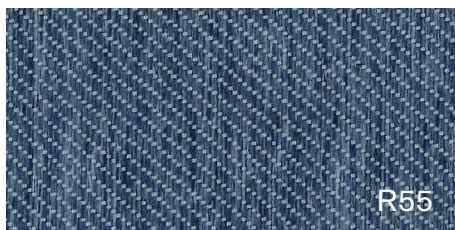
fully adjustable



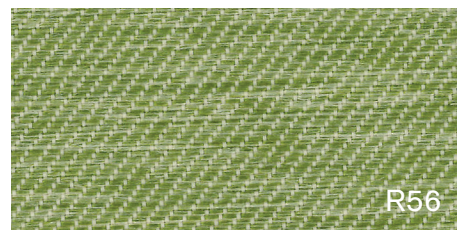
DESIGN OPTIONS



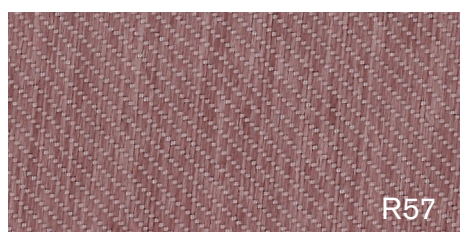
Slate grey



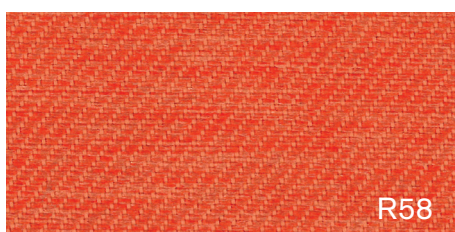
Denim blue



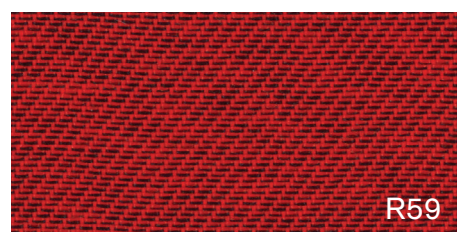
Peas green



Antik pink



Papaya orange



Ruby red

Order codes:

JACKO Streeter STD:
JACKO Streeter MAXI:

J5SWKPYYY
J5SWKPXYX

	with Seat inlay / footplate booster	STD	MAXI
Backrest height [mm]	650	650	730
Seat depth [mm]	200	250 / 275 / 300	320 / 345 / 370
Seat width [mm]	220/260	340	380
Seat to footrest [mm]	140-280	240-380	240-400
Backrest angle	0° -140°	0°- 155°	0°- 155°
Seat angle	20°	20°	20°
Total length [mm]		780	780
Total width [mm]		590	630
Total height /with adj.handle [mm]		950/1150	970/1200
Brake		foot oper.	foot oper.
Weight		15,5 kg	17,5 kg
Maximum load		40,0 kg	50,0 kg
Folded stroller length [mm]		860	920
Folded stroller width [mm]		590	630
Folded stroller height [mm]		370	370

JACKO Clipper

Semi adjustable standard rehab-stroller



- the best ratio of usage value and price
- 2 sizes- STD, MAXI
- excellent colour range
- wide accessory range

seat width
(by Flexi-pads set)

fully angle and height
adjustable footrest



folded stroller



fully adjustable

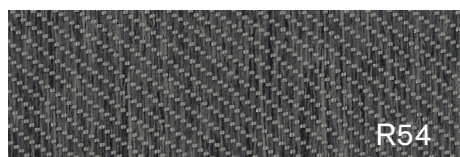
Size

STD

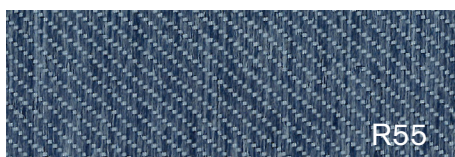
MAXI



DESIGN OPTIONS



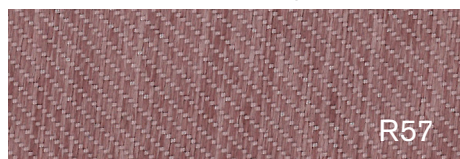
Slate grey



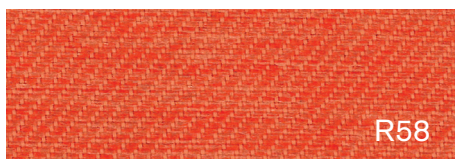
Denim blue



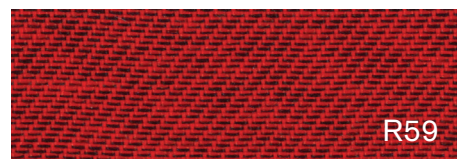
Peas green



Antik pink



Papaya orange



Ruby red

Newly redesigned standard rehab stroller represents simple-modern-design. The stroller is determined for children with mild postural needs where easy handling, very compact size and lightweight chassis are requested. The seat is equipped by fully detachable soft padded textile upholstery in fashion style and can be adjusted only in width by optional flexi pads set. The fully reclining backrest with the angle and height adjustable footrest offer great possibility of positioning.

The design of this stroller follow excellent features of Jacko 's line with compact and easy folding as well as in great ratio of proportions of the seat and chassis which enable to reach with the size STD to get through of entrance 600 mm.

Jacko is available in two sizes and it is determined not only for city usage but due to 175/265 mm solid wheels also for the light outdoor activities.

The correct usage of the product should be consulted with a seating specialist. The product corresponds to the newest EC standards as well as hygienic, technical and safety requirements.

Standard equipment:

- fully reclining backrest
- angle and height adjustable footrest
- angle adjustable footplate
- seat width adjustable by FLEXI-pads set(optional equipment)
- 175/260 mm solid wheels
- detachable grab bar with cover
- height adjustable ergonomic handlebar
- reflexive safety marks
- frame colours and fabric patterns according to the current offer.

Optional equipment:

- FLEXI-pads set
- padded frame covers
- basket
- sun shade
- headrest
- 5-point immobilization belt, abductor wedge and other equipment according to the actual list. Fabric patterns and frame according to the current offer

Order codes:

JACKO Clipper STD:	J5CWKPYYY
JACKO Clipper MAXI:	J5CWKPXYX

	STD	MAXI
Backrest height [mm]	650	730
Seat depth [mm]	300	370
Seat width [mm]	340	380
Seat to footrest [mm]	275-360	275-380
Backrest angle	0°- 155°	0°- 155°
Seat angle	20°	20°
Total length [mm]	780	780
Total width [mm]	590	630
Total height /with adj.handle [mm]	950/1150	970/1200
Brake	foot oper.	foot oper.
Weight	16,5 kg	18,5 kg
Maximum load	40,0 kg	50,0 kg
Folded stroller length [mm]	860	920
Folded stroller width [mm]	590	630
Folded stroller height [mm]	360	360

BEN Plus

Semi adjustable budget rehab-stroller



Budget solution for children with mild postural needs

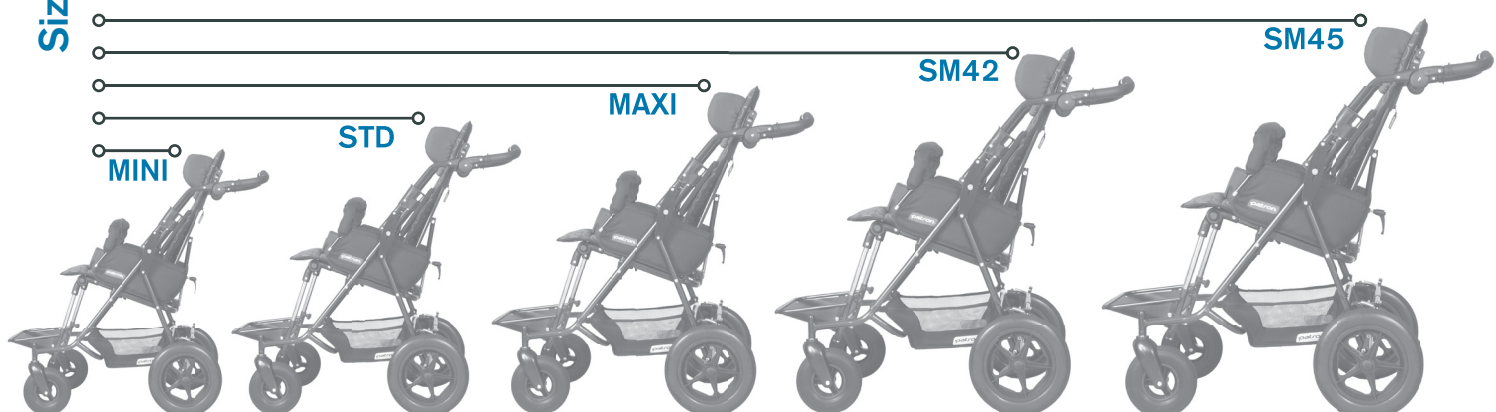


folded buggy

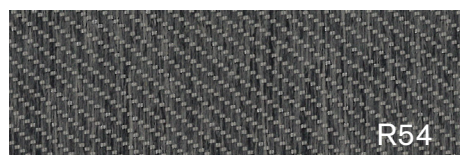


fully adjustable

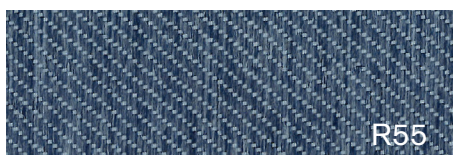
Size



DESIGN OPTIONS



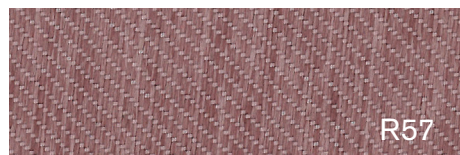
Slate grey



Denim blue



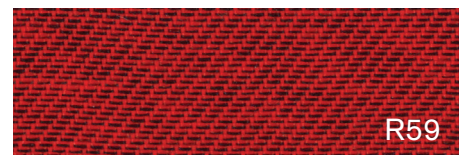
Peas green



Antik pink



Papyja orange



Ruby red

Robust and time-proven durable undercarriage with ergonomically shaped handle and 200/300 mm wheels along with 5 seat-sizes (MINI, Standard, MAXI, SuperMaxi 42 and 45) are the base for the standard line of rehab-strollers. BEN Plus – line is equipped with fully foldable undercarriage, produced of the light weight thin-walled tubes with powder coated surface finishing. Undercarriage is reinforced and optimized for heavy duty usage. Non size adjustable seat with option of 3 angle positions and height adjustable footrest is covered by fully detachable soft padded textile upholstery in fashionable design. The stroller can be optionally equipped with wider variety of special fixing devices and accessories. Easy handling is ensured by the stroller's fully and very compact foldable frame as well by the stroller's big wheels. The correct usage of the product should be consulted with a seating specialist.

The product corresponds to the newest EC standards as well as hygienic, technical and safety requirements.

Standard equipment:

- non size-adjustable seat with fully detachable soft padded textile upholstery
- fully reclining backrest
- seat with tilt-in space function (3 positions)
- height variations for attaching of the fixation devices and accessories
- angle and height adjustable footrest
- 200/300 mm wheels
- detachable grab bar with cover
- frame color and fabric patterns according to the current offer
- height adjustable ergonomic handlebar

Optional equipment:

- canopy, rain cover
- headrest, 4-point immo.belt, abductor wedge and other equipment according to the actual list
- work board
- basket

Order codes:

BEN Plus MINI:	B4PWKPMYY
BEN Plus STD:	B4PWKPYYY
BEN Plus MAXI:	B4PWKPXYY
BEN Plus SuperMaxi 42:	B4PWKPS2Y
BEN Plus SuperMaxi 45:	B4PWKPS5Y

	MINI	STD	MAXI	SuperMaxi42	SuperMaxi45
Backrest height [mm]	530	630	710	710	840
Seat depth [mm]	230	280	360	360	450
Seat width [mm]	300	340	370	400	450
Seat to footrest [mm]	190-330	190-330	220-380	220-380	280-450
Backrest angle	0° - 165°	0° - 165°	0° - 155°	0° - 155°	0° - 155°
Seat angle	17° / 20° / 23°	17° / 20° / 23°	17° / 20° / 23°	17° / 20° / 23°	17° / 20° / 23°
Total length [mm]	1020	1020	1040	1040	1200
Total width [mm]	580	580	620	680	690
Total height /with adj.handle [mm]	1050	1050	1080	1080	1080
Brake	foot oper.	foot oper.	foot oper.	foot oper.	foot oper.
Weight	15,0 kg	17,0 kg	18,0 kg	20,0 kg	22,0 kg
Maximum load	35,0 kg	35,0 kg	50,0 kg	75,0 kg	75,0 kg
Folded stroller length [mm]	940	940	940	940	950
Folded stroller width [mm]	580	580	620	680	765
Folded stroller height [mm]	430	430	430	430	440

DIXIE Plus

Hybrid semi adjustable standard rehab-stroller



clip-A-go



- product determined for smaller children with mild postural needs
- 100% ALUX chassis
- “clip-A-go” interface – great flexibility, easy manipulation
- reversible and angle adjustable seat



folded buggy



seat positioning

Size

UNI



DESIGN OPTIONS



Facelifted rehab-stroller DIXIE is based on new lightweight aluminium chassis produced by ALUX production technology. New genuine “clip-A-go” modular seat/chassis interface offers you great flexibility and easy manipulation. Seating comfort on non-sizeadjustable seat is ensured by fully detachable soft padded textile upholstery in fashionable style as well as by fully reclining backrest and angle and height adjustable footrest. The design of the stroller enabling folding to compact size as well as to reach excellent rate of the width between seat and chassis, what also makes possible to get through 600 mm only wide entrance. DIXIE is available in one universal sizes and it is designated not only for city usage but due to 200/265 mm solid wheels and spring suspension chassis also for the light outdoor activities. Product is determined for smaller children with mild postural needs. The correct usage of the product should be consulted with a seating specialist. The product corresponds to the newest EC standards as well as hygienic, technical and safety requirements.

Standard equipment:

- reversible seat unit with “clip-A-go” interface
- fully reclining backrest
- width adjustable seat by FLEXI-pads set (**) (optional equipment)
- angle and height adjustable footrest
- chassis with suspension
- 200/265 mm solid wheels
- detachable grab bar with cover
- height adjustable ergonomic handlebar
- 5-point immo.harness with crotch belt and shoulder padding
- abduction block, headwings
- basket
- frame colours and fabric patterns according to the current offer

Optional equipment:

- FLEXI-pads set with lateral support
- canopy
- rain cover, summer and winter footmuff and other equipment according to the actual list.

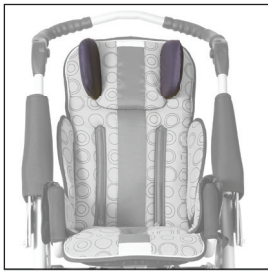
Order codes:

DIXIE Plus:

D4PWKPYYY

	D4P
Backrest height [mm]	530
Seat depth [mm]	280
Seat width [mm]	230/step/340 (**)
Seat to footrest [mm]	200-300
Backrest angle	115° - 170°
Seat angle	5°
Total length [mm]	830
Total width [mm]	595
Total height /with adj.handle [mm]	910/1080
Brake	foot oper.
Weight	15,0 kg
Maximum load	30,0 kg
Folded stroller length [mm]	1200
Folded stroller width [mm]	595
Folded stroller height [mm]	390

Optional accessories for rehab-strollers



headrest adjustable



headwings



headrest with neckrest



lumbar support



side trunkrest adjustable



five-point immobilisation belt



four-point immobilisation belt



two-point immobilisation belt



chest-belt addition to 4 & 5-point belt



immobilisation waistcoat



H-style harness



H-style harness TBX (breathable material)



chest immobilisation belt



Tilt lock for spastic children



abduction block



abduction belt



Pelvis fixation



knee block



Calf rest with fixation



feet fixation



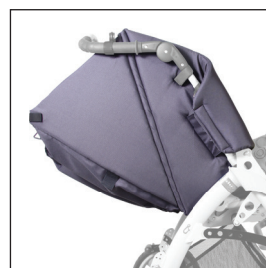
hood



summer footmuff



winter footmuff



extended side protection



Padded frame cover with side protection



rain cover



bag



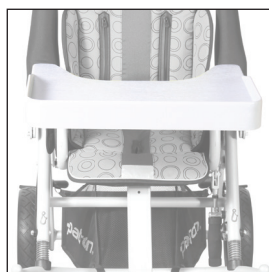
basket



heavy duty basket



HD - basket steel



work board



room base



FlexiPads set



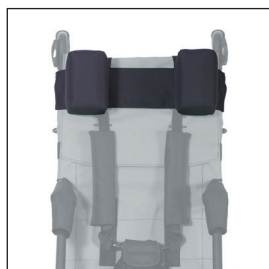
hip rest



footrest
SHORT version

.... and much more (ask for actual list)

Optional accessories for rehab-buggies



headrest
adjustable



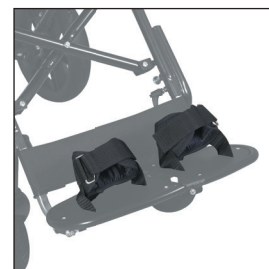
headwings



side trunkrest
adjustable



abduction block



feet fixation



H-style harness



immobilisation
waistcoat



Comfort side protection



two-point
immobilisation belt



two-pieces
flip-up footrest



summer footmuff



comfort seat cover



hood



rain cover



basket



tie-down set



work board (soft)



arm rest



thigh fixation

.... and more
accessories!

according to the actual list

SEATING AND POSITIONING POSTURAL PRODUCTS

Fully adjustable

- **FROGGO**
 - **TAMPA Classic**
-

FROGGO

Multipurpose fully adjustable comfort seating system



Highly innovative seating system with MONOSLIDE seat design and gas-spring fully adjustable high-low base.

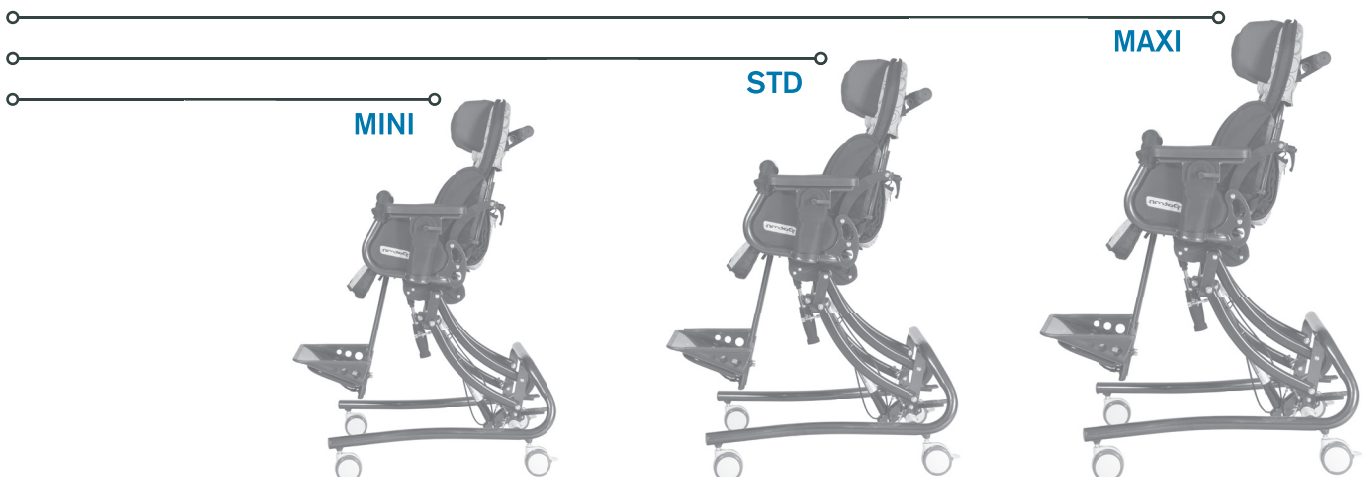


High-low adjustable

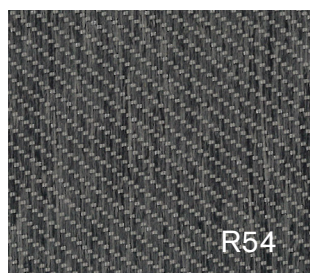


Fully adjustable

Size



DESIGN OPTIONS



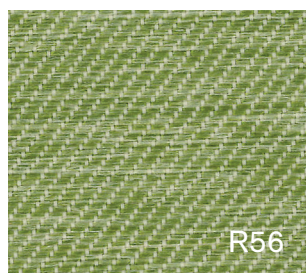
R54

Slate grey



R55

Denim blue



R56

Peas green



R57

Antik pink

FROGGO is highly innovative seating system for children with special needs, which require full positioning features as well as body support and stabilization in sitting for everyday activities (at home , at school, at rehabilitation centres ,). FROGGO seat is manufactured in 3 sizes. Full aluminium ALUX seat-unit is fully size adjustable, as well as fully position adjustable. Highly innovative seat MONOSLIDE design offers well approved flexible system for attaching and anchoring of fixation devices and positioning accessories (great variety of professional accessory available upon request). Seat shell is covered by fully detachable soft padded textile upholstery. High-low telescopic chassis enable great flexibility of seat unit positioning in different everyday situations (sitting, eating, resting, playing, ...) The correct usage of this product line should be consulted with a seating specialist. Products corresponds to the newest EC standards as well as hygienic, technical and safety requirements.

Standard equipment:

- height adjustable backrest, depth and width adjustment of the seat-base.
- detachable, height, position and angle adjustable armrests
- seat-unit with fully adjustable tilt-in-space function
- full backrest recline with lateral supports
- angle and height adjustable footrest, angle adjustable footplate
- telescopic gas-sprint high-low adjustment function
- front and rear castor wheels with brakes
- detachable seat grab bar, chassis push handle
- cover patterns and frame colours according to current

Optional equipment:

- workboard, headrest, abduction block, side trunkrest, 4-point immo. belt and much more according to the actual accessory list.

Order codes:

FROGGO MINI	FRG101MY
FROGGO STD	FRG101YY
FROGGO MAXI	FRG101XY

	MINI	STD	MAXI
Backrest height [mm]	440 - 570	510 - 680	550 - 700
Seat depth [mm]	185 - 270	230 - 330	290 - 400
Seat width [mm]	220 - 280	250 - 350	270 - 390
Seat to footrest [mm]	90 - 260	120 - 360	120 - 390
Seat to floor [mm]	330 - 570	330 - 570	330 - 570
Armrest height [mm]	140 - 220	170 - 250	170 - 250
Armrest angle [°]	0°	+/- 35°	+/- 35°
Backrest angle [°]	0° - 170°	0° - 170°	0° - 170°
Seat angle [°]	+5° - +35°	+5° - +35°	+5° - +35°
Footplate angle [°]	-8° - +11	-8° - +11	-8° - +11
Total length [mm]	670	670	670
Total width [mm]	510	510	510
Total height [mm]	1000	1120	1130
Push handle height [mm]	adjustable	adjustable	adjustable
Total weight [kg]	16,0	17,5	18,5
Maximum load [kg]	35,0	40,0	50,0

TAMPA Classic

Fully adjustable standard seating system



Fully adjustable seat unit and functional base allows the child to comfortably participate in any indoor activities



tilt-in-space



fully adjustable

Size

MINI



STD



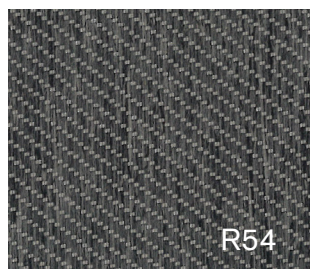
MAXI



SM42



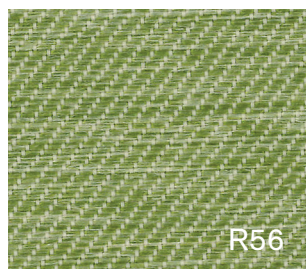
DESIGN OPTIONS



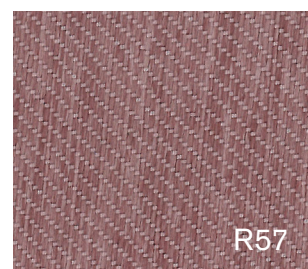
Slate grey



Denim blue



Peas green



Antik pink

TAMPA Classic - position and size-adjustable seating system for children with special needs who require support and stabilization in sitting for everyday activities performed at school, at home or in a rehabilitation clinic. TAMPA Classic offering many points of adjustable support that allow the chair to be adapted to each child's individual needs, using wide accessory range. The base of the seating system provides stability and mobility with tilt-n-space adjustment and the seat with height adjustable armrest. TAMPA Classic is available in 4 sizes – MINI, STD, MAXI, SuperMAXI 42.

Standard equipment:

- seat depth adjustment
- height adjustable backrest
- width adjustable seat by FlexiPads set (optional equipment)
- seat height and tilt in space function
- angle and height adjustable footrest
- height adjustable armrest
- rear castor wheels with brake
- telescopic wheeled base with length adjustment
- grab bar, armrest, push handle.

Optional equipment:

- workboard
- FlexiPads set
- side trunk rest, 4-point immo.belt, abductor block and much more of other equipment according to the actual list.

Order codes:

TAMPA Classic MINI	TMC101MY
TAMPA Classic STD	TMC101YY
TAMPA Classic MAXI	TMC101XY
TAMPA Classic SuperMAXI 42	TMC101S2Y

	MINI	STD	MAXI	SM42
Backrest height [mm]	450-600	520 - 650	570 - 680	570 - 680
Seat depth [mm]	200-260	280 - 310	340 - 430	340 - 430
Seat width [mm]	260/300	270/340	300/370	350/420
Seat to floor [mm]	530-580	530 - 580	530 - 580	530 - 580
Seat to footplate [mm]	140-280	260 - 400	260 - 400	260 - 500
Backrest angle [mm]	0° - 180°	0° - 180°	0° - 160°	0° - 160°
Seat angle [mm]	+/-27°	+/-27°	+/-25°	+/-25°
Total length [mm]	600	600	600	600
Total width [mm]	460	460	460	550
Total height / with handle [mm]	970	970	970	980
Brake	foot oper.	foot oper.	foot oper.	foot oper.
Total weight [kg]	15,0	15,0	17,0	17,5
Maximum load [kg]	35,0	35,0	50,0	75,0

TRAVEL SYSTEM SOLUTIONS

Travel systems

- **TOM5-CSI, DENVER with CARROT 3**

TOM5-CSI, DENVER with CARROT 3

Travel systems for children with special needs



TOM5-CSI, DENVER with CARROT 3

Travel systems for children with special needs



Mobility Solutions

PATRON chassis
+
CARROT baby car seat
(for children with special needs)



Size

MAXI



TOM5-CSI, DENVER with CARROT 3

Travel systems for children with special needs



Indoor Solutions

PATRON high-low frame
+
CARROT baby car seat
(for children with special needs)

Size

UNI





CARROT baby car seat



TOM5 - CSI



Interface CARROT



DENVER High-low indoor frame

Purpose made line of specially adjusted products, coming out from full-aluminum chassis of the TOM5 stroller's line. Product includes chassis and chassis to seat-interface (CSI) for baby car seat CARROT. CARROT baby car seat is purpose made product for children with special needs. Rehab-stroller chassis TOM5-CSI-version - is produced by ALUX production method, ensures chassis very low weight, high durability and extra compact size when folded. Additionally 175/260 mm solid wheels enables usage of the product not only in town but as well as for the light outdoor activities. Products correspond to the newest EC as well as standard hygienic, technical and safety requirements.

Standard equipment for TOM5 - CSI:

- CSI-interface for CARROT baby car seat
- CSI-interface is detachable and foldable, with adjustable tilt in space function.
- 175/260 mm solid wheels
- height adjustable ergonomic handlebar
- basket, padded frame cover
- frame colour according to the current offer

Standard equipment for DENVER:

- modular high-low adjustment function
- modular tilt in space adjustment function
- front and rear castor wheels with brakes (DENVER)
- frame colours (cover patterns) according to current offer

Order codes:

Travel systems solution

on request

MODULAR CHASSIS

High-low modular chassis

- **DURANGO/DENVER**
-

Modular stroller chassis-CSI-versions

- **TOM5 - CSI**
 - **TOM4 - CSI**
-

DURANGO / DENVER

High-low outdoor and indoor modular chassis



DURANGO

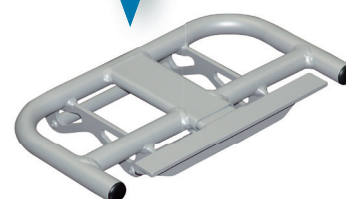


DURANGO with TOM5-seating system

DENVER

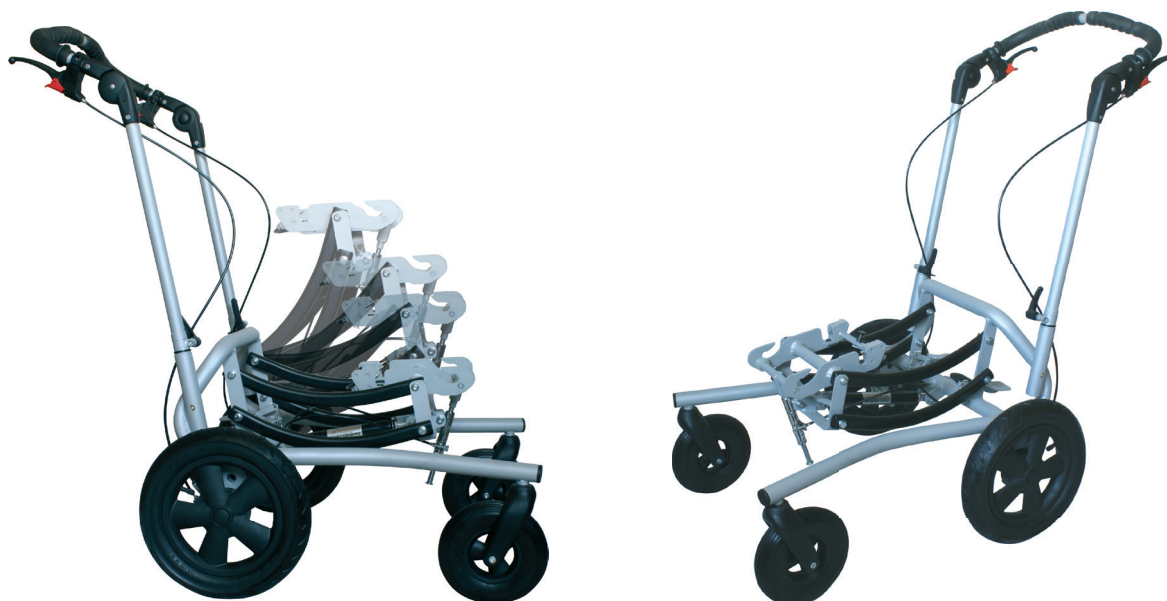


seat-shell
(for seat-shell details contact your nearest
seat-shell producer)



CSI-interface with quick-release system





DURANGO and DENVER - product line of modular chassis for outdoor (DURANGO) and indoor (DENVER) activity. Modular chassis are on purpose designed as a carrier for either standardised fully position and size adjustable seating system for children with special needs - TOM 5 (available in 3 sizes - MINI, STANDARD, MAXI), or as a carrier of made to measure seat-shells for seriously handicapped children with special needs (CSI-interface accessory required, not included in standard equipment). Modular frames are equipped with foot operated modular high-low adjustment and foot operated modular tilt in space adjustment to support and stabilize the sitting by everyday performed activities at school, at home, at rehabilitation clinic, etc. Both modular chassis are adjustable from 25 kg to 50 kg of user's weight, when seat unit is 5 kg. DURANGO may be optionally equipped with hand operated drum brakes. The correct usage of this product line should be consulted with a seating specialist. Products corresponds to the newest EC standards as well as hygienic, technical and safety requirements.

Standard equipment:

- modular high-low adjustment function
- modular tilt in space adjustment function
- front and rear castor wheels with brakes (DENVER)
- 200 mm front solid / 300 mm rear air wheels (DURANGO)
- height adjustable and detachable ergonomic handlebar (DURANGO)
- frame colours (cover patterns) according to current offer

Optional equipment:

- CSI-interface, angle and height adjustable footrest set
- hand operated drum brakes (DURANGO)

Order codes:

DURANGO	RKC161YYY
DENVER	RKC151YYY

	DURANGO	DENVER
Interface to floor [mm]	335-675/335-665/380-655	260-550/260-540/260-530
Interface angle	-10/35°	-10/35°
Total length [mm]	950	670
Total width [mm]	645	510
Total height with handle [mm]	870/1130	-
Folded frame height [mm]	945/470	320
Brake	foot oper.	foot oper.
Weight	16,0 - 17,0 kg	9,0 kg
Maximum load - user + 5 kg seat unit	20,0 - 50,0 kg	20,0 - 50,0 kg

TOM5 - CSI (chassis)

Aluminum rehab-stroller modular chassis with the CSIinterface





folded TOM 5 STREETER CSI Version



Angle and height adjustable footrest set
(optional equipment)

Purpose made line of specially adjusted products, coming out from high-tech full-aluminum chassis of the Tom5 stroller's line, includes the CSI-interface. This products line is strongly determine for the seat-shell producers or for the seating professionals to provide customised solution of the seating arrangements. TOM5 - CSI - is produced by ALUX production method, ensures chassis very low weight and high durability. Fully foldable chassis to the extra compact size, includes among others chassis to seat-shell interface with very friendly tilt in space adjustment, safe brake system, spring-suspension, ergonomically shaped handlebar with the height adjustment. Additionally 260 mm (175/260 mm) solid wheels enables usage of the product not only in town but as well as for the light outdoor activities. Products correspond to the newest EC as well as standard hygienic, technical and safety requirements.

Standard equipment:

- detachable and reversible CSI-interface with the quick-release lock
- CSI-interface with fully adjustable tilt in space function
- 260mm (175/260 mm) solid wheels
- height adjustable ergonomic handlebar
- basket, padded frame cover
- chassis in CRASH TESTED version according to EN ISO 7176/19
- frame colour according to the current offer

Optional equipment:

- angle and height adjustable footrest set
- air wheels (rear)

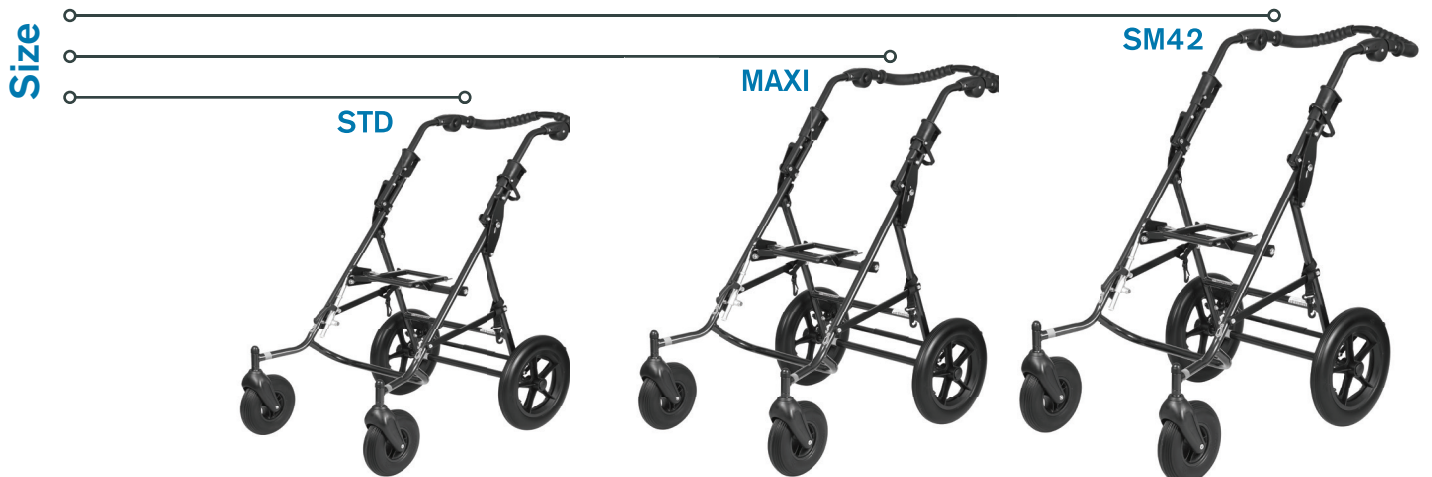
Order codes:

TOM5 - CSI MINI:	T5SWKPMY9
TOM5 - CSI STD:	T5SWKPY9
TOM5 - CSI MAXI:	T5SWKPY9
TOM5 - CSI SM42:	T5SWKPS29

	MINI	STD	MAXI	SM42
Width-clearance [mm]	360	400	440	480
Interface to floor [mm]	485	485	485	485
Interface angle	+40°/-20°	+40°/-20°	+40°/-20°	+45°/-28°
Total length [mm]	760	760	760	760
Total width [mm]	590	630	670	710
Total height /with adj.handle [mm]	950/1110	950/1110	970/1180	970/1180
Brake	foot oper.	foot oper.	foot oper.	foot oper.
Weight	11,0 kg	11,5 kg	12,5 kg	13,0 kg
Maximum load	35,0 kg	40,0 kg	50,0 kg	50,0 kg
Folded stroller length [mm]	840	850	860	860
Folded stroller width [mm]	590	630	670	710
Folded stroller height [mm]	360	370	370	370

TOM4 - CSI (chassis)

Rehab-stroller modular chassis with the CSI-interface





folded chassis



Angle and height adjustable footrest set
(optional equipment)

Purpose-made line of specially adjusted products, which comes out from approved conception of PATRON well-known TOM-strollers' line, includes purpose-adjusted chassis and the CSI-interface. This products line is strongly determine for the seat-shell producers or for the seating professionals to provide customised solution of the seating arrangements.

TOM4 - CSI - product line of fully adjustable special undercarriages is based on well approved design of the TOM-line undercarriages with 300 mm (200/300 mm) solid wheels, that enables usage of the products in town, as well as in light terrain. Fully foldable spring-cushioned undercarriage is produced from lightweight thin-walled tubes with powder coating finish. Undercarriage includes chassis to seat interface with the quick-release lock, new brake-system, ergonomically shaped height adjustable handlebar. Easy handling is ensured as well by the stroller's fully foldable frame. All products correspond to the standard hygienic, technical and safety requirements.

Standard equipment:

- detachable and reversible CSI-interface with the quick-release lock
- CSI-interface with fully adjustable tilt in space function
- front fixed wheels(FFW) or front swivel castor-wheels(FSCW) version
- 300mm (200/300 mm) air wheels
- height adjustable ergonomic handlebar
- chassis in CRASH TESTED version according to EN ISO 7176/19
- frame colour according to the current offer

Optional equipment:

- angle and height adjustable footrest
- air wheels (rear)

Order codes:

TOM4 - CSI Standard:	T4CWKPYY9
TOM4 - CSI MAXI:	T4CWKPXY9
TOM4 - CSI SuperMaxi 42:	T4CWKPS29

	STD	MAXI	SuperMaxi42
Width-clearance [mm]	370	410	460
Interface to floor [mm]	490	500	500
Interface angle	+/-27°	+/-25°	+/-25°
Total length [mm]	860	920	1100
Total width [mm]	580	630	680
Total height /with adj.handle [mm]	1010/1150	1030/1180	1030/1180
Brake	foot oper.	foot oper.	foot oper.
Weight	10,0 kg	11,0 kg	12,0 kg
Maximum load	40,0 kg	55,0 kg	80,0 kg
Folded stroller length [mm]	930	960	960
Folded stroller width [mm]	580	630	680
Folded stroller height [mm]	430	430	430

SPECIALTY PRODUCTS

rehab-strollers for newborns

- **TOM5 Streeter-Newborn**
-

rehab-strollers for twins and siblings

- **TOM4 Duo**
 - **TOM4 Duo-Combi**
-

customised products

TOM 5 Streeter-NEWBORN

Multipurpose rehab-stroller for newborns



Advanced rehab-stroller
for newborns and infants
with special needs



HD steel basket for respiratory equipment
(optional equipment)



Ready for subsequent use with the
multipurpose fully adjustable and
reversible rehab-seat unit



Tom 5 Streeter-NEWBORN - New product solution for handicapped newborns and infants combining advantages of comfortable baby carrycot AMIGO and rehab chassis of Tom 5 as high-tech full-aluminum and durable chassis which can be optionally used also with Heavy duty steel basket for respiratory equipment or even a baby car seat MIMMO Plus (gr.0+) or other equipment.

After the baby will grow up the carrycot AMIGO can be easily replaced by rehab seat unit and further used as a multipurpose fully foldable and adjustable rehab stroller. The correct usage of the product should be consulted with neonatologists and seating specialist. The product corresponds to the newest EC standards as well as hygienic, technical and safety requirements.

Standard equipment:

- baby carrycot AMIGO
- detachable CSI-interface with clip-A-go adapters and fully adjustable tilt-in-space function
- 200 mm front solid / 295 mm rear air wheels
- height adjustable ergonomic handlebar
- basket, padded frame cover
- frame colour and fabric pattern according to the current offer

Optional equipment:

- Car seat MIMMO Plus (gr. 0+)
- HD –basket (steel or textile)
- hand operated drum brakes
- rehab seat unit Tom 5 with full additional accessories options

Order codes:

TOM 4 Streeter-NEWBORN:

T5SWKCNBY

	T5S-NB
Carrycot lenght [mm]	820
Carrycot width [mm]	340
Carrycot height [mm]	200
Total length [mm]	760
Total width [mm]	670
Total height /with handle [mm]	970/1180
Brake	foot oper.
Weight	16,0 kg
Maximum load	50,0/10,0 kg
Folded stroller length [mm]	860
Folded stroller width [mm]	670
Folded stroller height [mm]	370

TOM 4 DUO

Multipurpose fully foldable rehab-stroller for twins

TOM 4 Xcountry DUO is based on the very well approved TOM-line design of rehab-strollers for handicapped children. The fully foldable spring-suspensioned undercarriage is produced from light weight thin-walled tubes with powder coated surface finishing. Seats of the stroller are detachable and can be independently placed in or against the driving direction. Seat shells are covered by fully detachable soft padded fabric upholstery in fashionable design. Easy handling is ensured by the front swivel castor-wheels with direction lock and as well by the stroller's fully foldable frame even with attached seats. The product corresponds to standard hygienic, technical and safety requirements.



Basic equipment:

- two in function independent, detachable and independently reversible seats
- seats with fully adjustable tilt in space function
- fully reclining backrests
- height adjustable backrest
- adjustable depth of the seats with corresponding adjustment of footrests position
- width adjustable seats by FlexiPads set (optional equipment)
- angle and height adjustable footrests
- 200mm front swivel castor-wheels / 300mm rear air wheels
- detachable side soft cushions
- detachable safety bars
- frame colour and fabric patterns according to the current offer



Optional equipment:

- hood, FlexiPads set, rain cover, headrest, side trunk rest, 4-point immo. belt, hip rest, abductor block and other equipment according to the actual list

Order codes:

TOM 4 Xcountry DUO - MINI/MINI:	T4XWYCMDM
TOM 4 Xcountry DUO - MINI/STD:	T4XWYCCDM
TOM 4 Xcountry DUO - STD/STD:	T4XWYCYDY

	T4XWD-M/M	T4XWD-M/S	T4XWD-S/S
Backrest height [mm]	450-600	combi	520-680
Seat depth [mm]	270-310	combi	270-310
Seat width [mm]	260/300	combi	240/280/340
Seat to footrest [mm]	140-280	combi	200-350
Backrest angle	0°, -175°	0°, -175°	0°, -175°
Seat angle	+/-27°	+/-27°	+/-27°
Total length [mm]	1020	1020	1020
Total width [mm]	980	980	980
Total height /with handle [mm]	1010	1010	1010
Brake	foot oper.	foot oper.	foot oper.
Weight	28,0 kg	28,0 kg	28,0 kg
Maximum load	60,0 kg	60,0 kg	60,0 kg
Folded stroller length [mm]	900	900	900
Folded stroller width [mm]	980	980	980
Folded stroller height [mm]	550	550	550

TOM 4 DUO - COMBI

Multipurpose rehab-stroller for siblings



Tom 4 DUO-COMBI is unique product solution for siblings, offering an advanced combination of rehab seat unit with the AMIGO carrycot for newborn baby or optionally also with the ERGO sporty seat unit later on. Tom 4 DUO-COMBI is based on quality approved TOM 4 – line, fully foldable, spring-suspensioned undercarriage, equipped with rear air wheels (300 mm) and front swivel castor wheels (200 mm) ensuring easy handling. Comfortable seat unit and carrycot in fashionable design are detachable and can be placed in or against the driving direction. In addition both units can be used independently with their single original chassis to keep maximum components variability. The product corresponds to EC standard hygienic, technical and safety requirements.



Basic equipment Rehab seat:

- detachable and reversible seat
- seat with fully adjustable tilt in space function
- fully reclining backrest
- height adjustable backrest and depth adjustment of the seat-base
- width adjustable seat by FlexiPads set (optional equipment)
- angle and height adjustable footrest
- detachable side soft cushions
- detachable safety bar
- frame colour and fabric patterns according to the current offer

Optional equipment:

- hood, FlexiPads set, rain cover, headrest, side trunk rest, 4-point immo. belt, hip rest, abductor block and other equipment according to the actual list

Basic equipment Carrycot for newborn:

AMIGO carrycot with oversized width (340 mm) and length (800mm)
removable upholstery with pockets and hood with summer mesh
reflexive safety marks

Optional equipment:

ERGO sporty seat unit as follow-up solution
summer accessory set, winter accessory set
MIMMO Plus car seat



ERGO seat unit



AMIGO carrycot



MIMMO car seat

Order codes:

TOM 4 Xcountry DUO-COMBI - MINI: T4XWYCMDC

TOM 4 Xcountry DUO-COMBI - STD: T4XWYCYDC

	T4XWDC-M	T4XWDC-S
Backrest height [mm]	440-610	510-650
Seat depth [mm]	240-300	240-300
Seat width [mm]	240/280	240/280/340
Seat to footrest [mm]	150-300	200-350
Backrest angle	0°, -180°	0°, -180°
Seat angle	+/-27°	+/-27°
Total length [mm]	1020	1020
Total width [mm]	1040	1040
Total height /with handle [mm]	1010	1010
Brake	foot oper.	foot oper.
Weight	24,0 kg	24,0 kg
Maximum load	60,0 kg	60,0 kg
Folded stroller length [mm]	900	900
Folded stroller width [mm]	1040	1040
Folded stroller height [mm]	530	530

Manufactured by:



PATRON Bohemia a.s. | Ceskolipska 3419, CZ-27601 Melnik, Czech Republic

tel.: +420-315-630-135, +420-315-630-111

e-mail: reha.en@patron.eu | <http://www.patron.eu>



Company PATRON is ISO 13485:2016 and ISO 9001:2015 certified. Products fulfil all appropriate hygienic and safety EC-standards and regulations: EN 12183, EN 12182, EN 1130, EN 14971, ISO 7176, etc. Used materials fulfil high hygienic and technical requirements and ensure the top level of quality.

**Quality
guarantee**



CERTIFICATE NO. 25247/A/0001/Cz



PATRON Bohemia a.s.

Ceskolipska 3419, CZ-27601 Melník, Czech Republic

Tel.: +420 315 630 135, +420 315 630 111

E-mail: reha.en@patron.eu

<http://www.patron.eu>

